



# LAMILUX Composites

Automotive standard in the bus industry

## LAMILUX Composites – materials for the markets of the future



LAMILUX product finder at: [www.LAMILUX.de](http://www.LAMILUX.de)

LAMILUX is Europe's largest producer of sheets and lengths of fiber-reinforced plastic.

The composites produced on five production lines in a large scale industrial flat sheet process make highly stable, resilient and extremely light-weight construction materials, which pave the way for promising product developments and also open up new fields of application in growing global industries such as lightweight construction of caravans, commercial vehicles and busses.



» Our enthusiasm for impressing our customers with innovative, well-developed products and creative solutions and helping them achieve their own successes with their company is what drives both me and our company. Every day at LAMILUX is devoted to adapting our technological developments and our services to meet our customers' demands and needs: Our company philosophy puts our customers at the heart of everything we do. «

**Dr. Heinrich Strunz,**  
the third generation of managing partners at LAMILUX  
Heinrich Strunz GmbH



### The LAMILUX CI Philosophy

Customer value is the reason for our existence and is the focus of our activities. This requires harmony, identity and a balance between customer benefit and company strategy.

These guiding ideas for our company's actions and our day-to-day relationship with our customers are described in LAMILUX's company philosophy:

#### Customized intelligence - Serving the customer is our mission:

This requires outstanding performance and leadership in all areas relevant to customers, particularly in the role of:

- Quality leader - optimum benefit for customers
- Leader in innovation - at the cutting edge of technology
- A leader in service - fast, uncomplicated, reliable and friendly
- A leader in expertise - optimum sales and technical advisory services
- A leader in solving problems - individual, tailored solutions

## LAMILUX will help you gain the competitive edge

» We started our project with quite a challenge... at the end, dedication and knowledge made the difference. Great products from a great company! «

**Patrick Jonckheere,** (Company Mercury Trading)  
Development partner "Project Bermuda Bus - segmented side walls "

» With our innovative product solution for the bus roof „Woven Roving 48% SH Gelcoat“ we simplify your production process (production in one piece, possible - no train collisions) and help you to generate competitive advantages: hail resistance and corrosion resistance and weight savings. With our new development „High Strength X-treme Gelcoat“ as segmented material for the side walls of buses you save time-consuming and costly painting, in case of damage simple repairs are possible. «

**Martin Gräf,** (Application Engineer LAMILUX Composites GmbH)  
his opinion about the possibilities of LAMILUX GRP

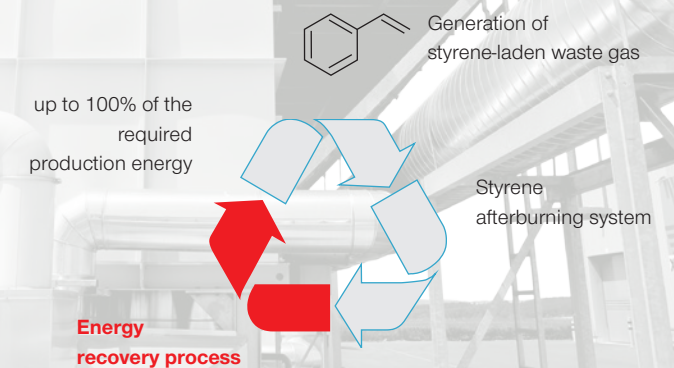


## LAMILUX will help you achieve sustainability

• We produce your materials in an extremely **raw-material- and energy-saving production process we developed ourselves.**

• We manufacture your construction material in an **environmentally-friendly manner with award-winning technology.** Our afterburning systems transform the extracted styrene-laden air into energy and direct it back into the production process.

• We select our suppliers based on their **sustainability in the production procedures.**

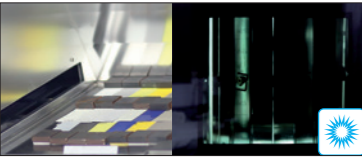


# LAMILUX Composites –

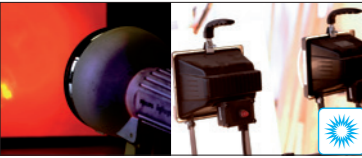
Automotive standard in the commercial vehicle industry

LAMILUX is the world's first manufacturer of fibre-reinforced composites to have voluntarily submitted a major portion of its laboratory and testing facilities to testing by TÜV Süd Germany and to have successfully obtained certification. With this, LAMILUX has submitted itself to the very highest quality requirements. This is thanks to our research and development department that provides extensive input throughout all stages of LAMILUX Composites materials' development, production and life cycle. Extensive substance tests and analyses form the basis in reliably examining the properties of our composites and in securing their durability and service life - to provide you with constant 100% quality at all times. For this purpose, we make use of our state-of-the-art laboratory technology and simulation environments.

posites materials' development, production and life cycle. Extensive substance tests and analyses form the basis in reliably examining the properties of our composites and in securing their durability and service life - to provide you with constant 100% quality at all times. For this purpose, we make use of our state-of-the-art laboratory technology and simulation environments.



Sun-/Xenotest



Infrared/halogen radiation



Outdoor weathering



Thermography test



Noise prevention acc. to PIEK



Abrasion/slip resistance



Adhesion/delamination test



Gas chromatography

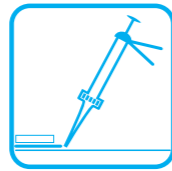
All tests certified in compliance with TÜV Süd quality



TÜV SÜD certified quality



Adhesion



Solvent welding



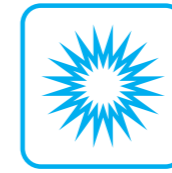
Temperature changes



Rain



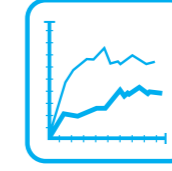
Hail



UV radiation



Frost



Mechanical load



Chemical load



Abrasion



Noise



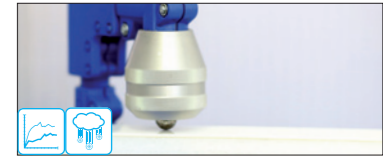
Scratching resistance



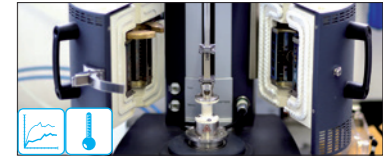
All tests certified in compliance with TÜV Süd quality



TÜV SÜD certified quality



Impact test



DMA measurement



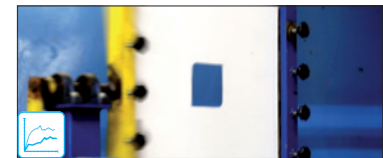
Temperature change test



Condensation water test



Tensile/bending strength



Torsion test



Barcol hardness



Impact resistance acc. to Charpy

## LAMILUX will help you achieve security – **Made in Germany**

- Our **continuous production process** controlled by **highly qualified skilled workers** always produces **consistent, high quality** for you.
- **We create your unique selling points:** Our engineers and technicians work with you in close consultation on the material's intended use to develop **individual, sector-specific product solutions**.
- As European market leader, we have **large production capacities** and can therefore guarantee **reliable delivery**
- Before each composite production, we carry out **extensive checks on the delivered** raw materials. We choose our suppliers based on the highest quality criteria.
- **During and after the production process**, we subject your material to extensive checks and **laboratory tests**.
- **We check the mechanical, chemical and physical properties** of the finished plastic in the **real usage environment** and test its behaviour in combination with other materials.
- **We continue to develop your individual material** and work for you to optimize the material properties in the relevant application areas.

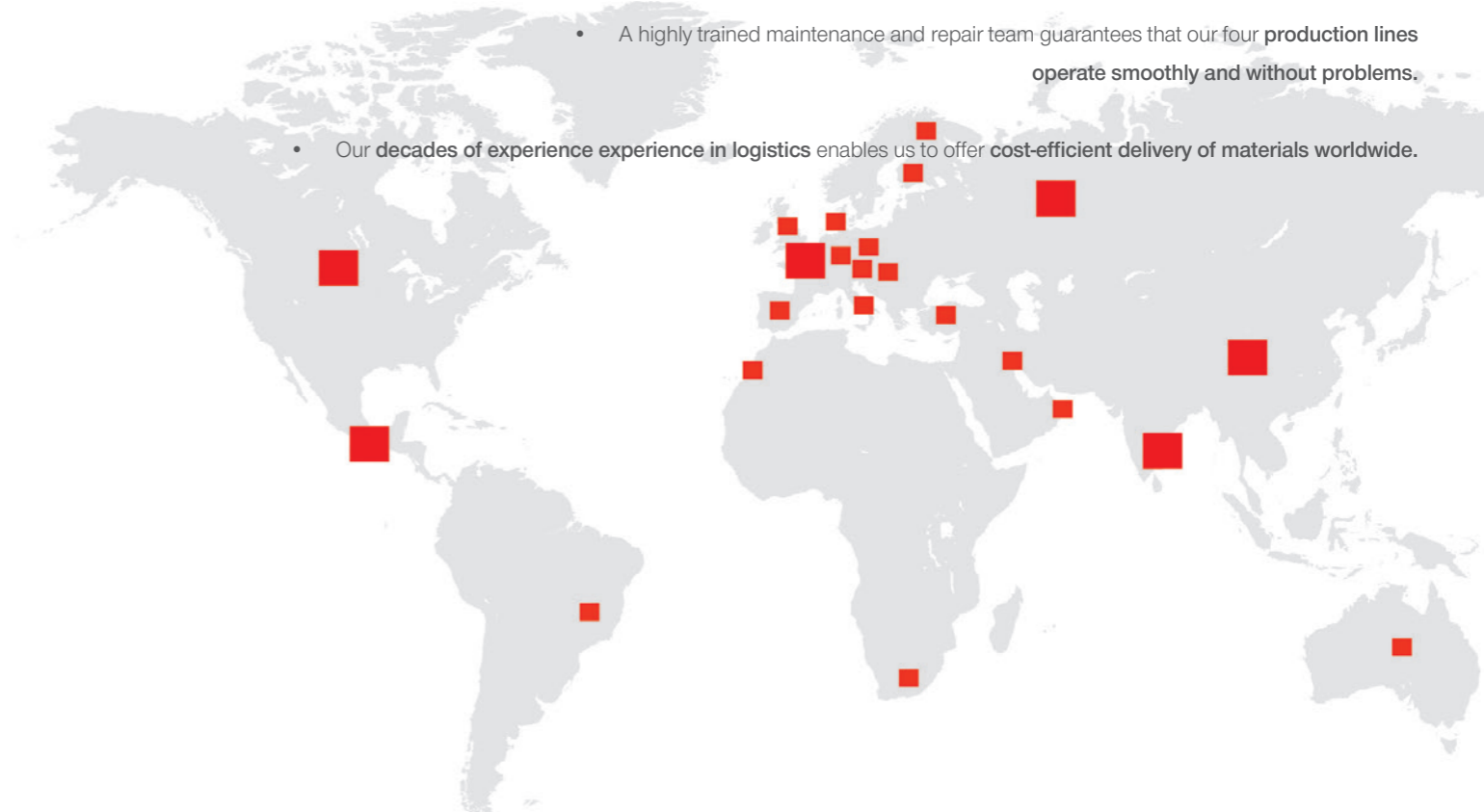


## LAMILUX will save you time and money



The continuous production process guarantees the maximum quality and consistency

- You can always reach us in your specific time zone thanks to our **international local representatives**.
- **Warehouses in a large number of different countries and regions** guarantee quick delivery times for your material **anywhere in the world**.
- **We transfer our know-how** and offer **on-site engineering support** for processing the composites and questions relating to the specific application.
- Our **flexible production technology** allows us to begin producing your individual material
  - quickly **after just a short machine changeover time**.
- Our continuous, highly-automated production process **delivers results that can be reproduced at any time**  
**Materials in the highest, consistent quality.**



- A highly trained maintenance and repair team guarantees that our four **production lines** operate smoothly and without problems.

- Our decades of experience in logistics enables us to offer **cost-efficient delivery of materials worldwide**.

# LAMILUX Composites – Individual solutions for your applications



Commercial vehicle industry



Caravan industry



Construction industry



Sports industry

The information submitted in this brochure is based on our current knowledge and experience. Technical values do not represent any assurance of characteristics within the scope of a specification. Users have to check the product's suitability for the respective application owing to the wide range of available application parameters. We reserve the right to make mistakes or modifications.



LAMILUX Composites GmbH  
Zehstraße 2 · Postfach 1540 · 95111 Rehau · Tel.: +49 (0) 92 83 / 5 95-0 · Fax +49 (0) 92 83 / 5 95-29 0  
E-Mail: [information@lamilux.de](mailto:information@lamilux.de) · [www.lamilux.com](http://www.lamilux.com)

